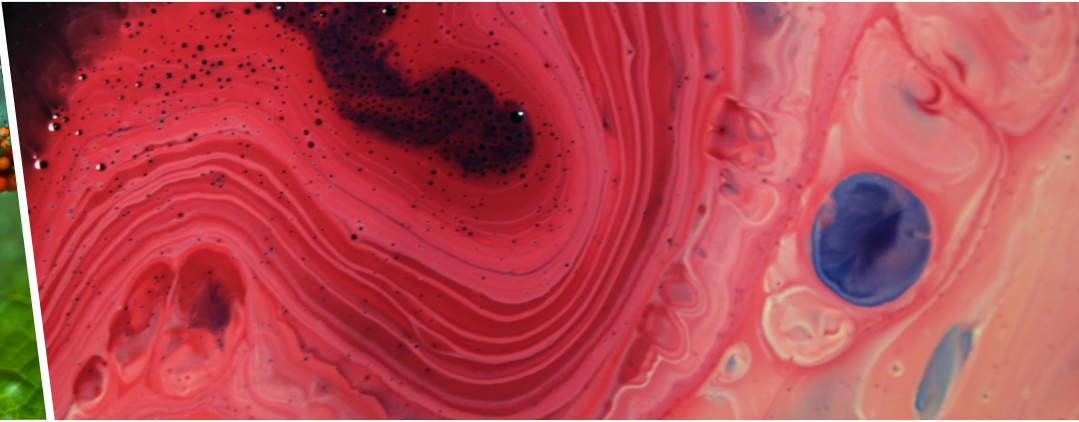




COLLEGE OF
ARTS AND SCIENCES

Integrative Biology



MAJORS

Biology, BS
Biology: Allied Health, BS
Biology: Environmental Biology, BS
Biology: Pre-Medical Sciences, BS
Biology: Secondary Teacher Certification, BS
Physiology, BS

Physiology: Pre-Medical Sciences, BS
Zoology, BS
Zoology: Ecology and Conservation Biology, BS
Zoology: Pre-Medical Sciences, BS
Zoology: Pre-Veterinary Sciences, BS

As a student in the **Department of Integrative Biology**, you will use knowledge of the life sciences to answer questions through hands-on course experiences and independent projects. Lab work offers opportunities to work with and research invertebrates, ecological systems and physiological processes. Fieldwork focuses on ecosystems and organisms such as monarch butterflies, collared lizards, bluebirds and daphnia. You will have the opportunity to work in specialized labs like the Ecotoxicology and Water Quality Research Laboratory.

PROGRAM HIGHLIGHTS

- **Biology** - Study in-depth elements of the biological sciences.
- **Physiology** - Course work in general zoology, genetics, anatomy, biochemistry, mathematics, physics, and chemistry.
- **Zoology** - Designed to study the biology of animals.

Integrative Biology majors prepare you for medically-related professional school or graduate school, and may applied professional careers.

CONTACT INFORMATION

Integrative Biology
501 Life Sciences West
Stillwater, OK 74078
405-744-5558
integrativebiology.okstate.edu

to learn more, visit
cas.okstate.edu



Integrative Biology



CAREER & INDUSTRY

- Physician
- Wildlife & Forestry
- Veterinarian
- Research
- Health Care
- Politics & Policy
- Biotechnology
- Environmental Management
- Forensic Science

SALARY

up to

\$62,000*

Students with a major from the Department of Integrative Biology make on average between \$30,000 and \$62,000 annually.

**Figured based on figures from NACE*

GET INVOLVED

Stay active on campus while making lifelong friends. Get involved with groups, such as:

- American Medical Student Association
- Beta Beta Beta
- CAS Ambassadors
- CAS Student Council

Oklahoma State University
Office of Undergraduate Admissions

admissions.okstate.edu | 405-744-5358

COURSES TO EXPECT

- Principles of Animal Nutrition
- Physiology
- Organic Chemistry
- Genetics and Evolution
- Parasitology

RESEARCH AND OPPORTUNITIES

- Animal Behavior
- Ecosystem Studies
- Evolutionary Ecology
- Toxicology
- Animal Physiology
- Undergraduate Research
- OSUTeach
- Guest Speakers and Presentations
- Career Advising
- Collection of Vertebrates for research and preservation

STUDENT INTERNSHIPS

- USFS Intern for Greening Youth Foundation
- Pagosa Springs, CO
- Fellow at Alaska Sealife Center
- Seward, AK
- Undergraduate Research Assistant for Oklahoma Aquarium
- Jenks, OK

SCHOLARSHIPS

Many scholarships are available for prospective freshmen, transfer students, current students and continuing students. For more scholarship information, please visit cas.okstate.edu/scholarships



COLLEGE OF
ARTS AND SCIENCES